

“Bartram’s Mile” Neighborhood Park Space and a Signature Green Landscape

PHILADELPHIA
**PARKS &
RECREATION**


**BARTRAM'S
GARDEN 1728**
National Historic Landmark House and Garden


schuykill
PARKS

 **PennPraxis**

Agreement between Philadelphia Industrial Development Corporation and Philadelphia Parks and Recreation to convert at least 100 feet of river frontage north and south of Bartram's Garden into park and trail space. This process intends to:

- Get community input and create design alternatives for new riverfront park space in Southwest Philadelphia;
- Engage users from immediate neighborhoods, city and region;
- Propose new activities to better connect people to the outdoors and the Schuylkill River;
- Improve the connections to Bartram's Garden;
- Provide a unique destination along Schuylkill Banks trail.

project overview





GRAYS AVENUE
LINDBERGH BOULEVARD

51ST STREET

49TH STREET

GRAYS FERRY AVENUE

New
Development
(PIDC)

New Trail and
Riverfront Park

rtram's
arden



LINDBERGH BOULEVARD

58th Street
Greenway

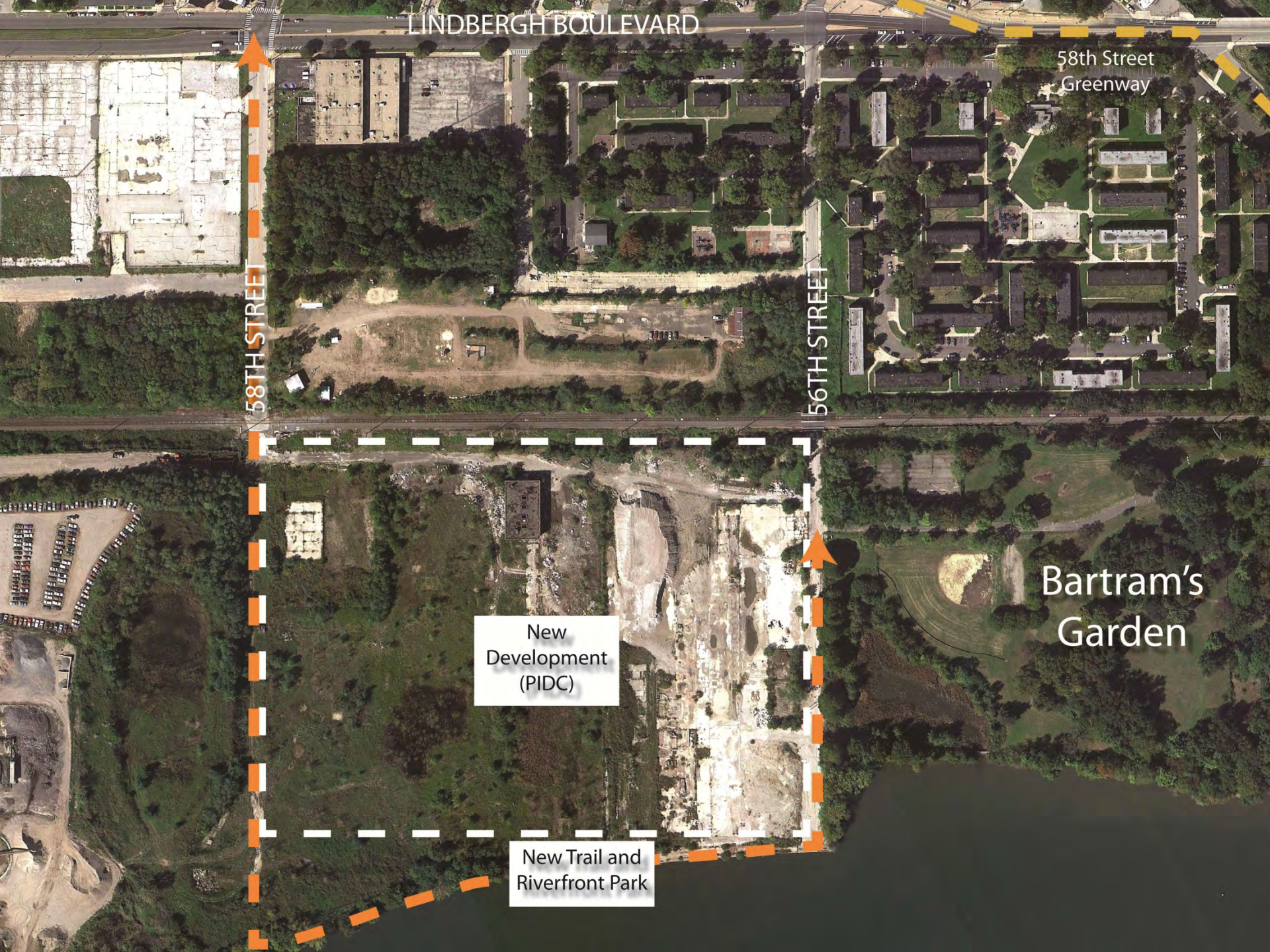
58TH STREET

56TH STREET

New
Development
(PIDC)

Bartram's
Garden

New Trail and
Riverfront Park





connections



connections



connections



connections



connections



public underutilized land



public underutilized land



public underutilized land



public underutilized land



public underutilized land



public underutilized land



public underutilized land



public underutilized land



49TH STREET
HISTORIC
PAVEMENT

RESIDENTIAL
NEIGHBORHOOD

BARTRAM'S GARDEN
HISTORIC LANDMARK

RESIDENTIAL
NEIGHBORHOOD

BARTRAM
VILLAGE

PUBLIC
OWNERSHIP

COMMUNITY GARDEN
URBAN NUTRITION INITIATIVE

opportunities

N



Bartram's Connector Trail
Completed June 2012

Grays Ferry Crescent
Completed June 2012

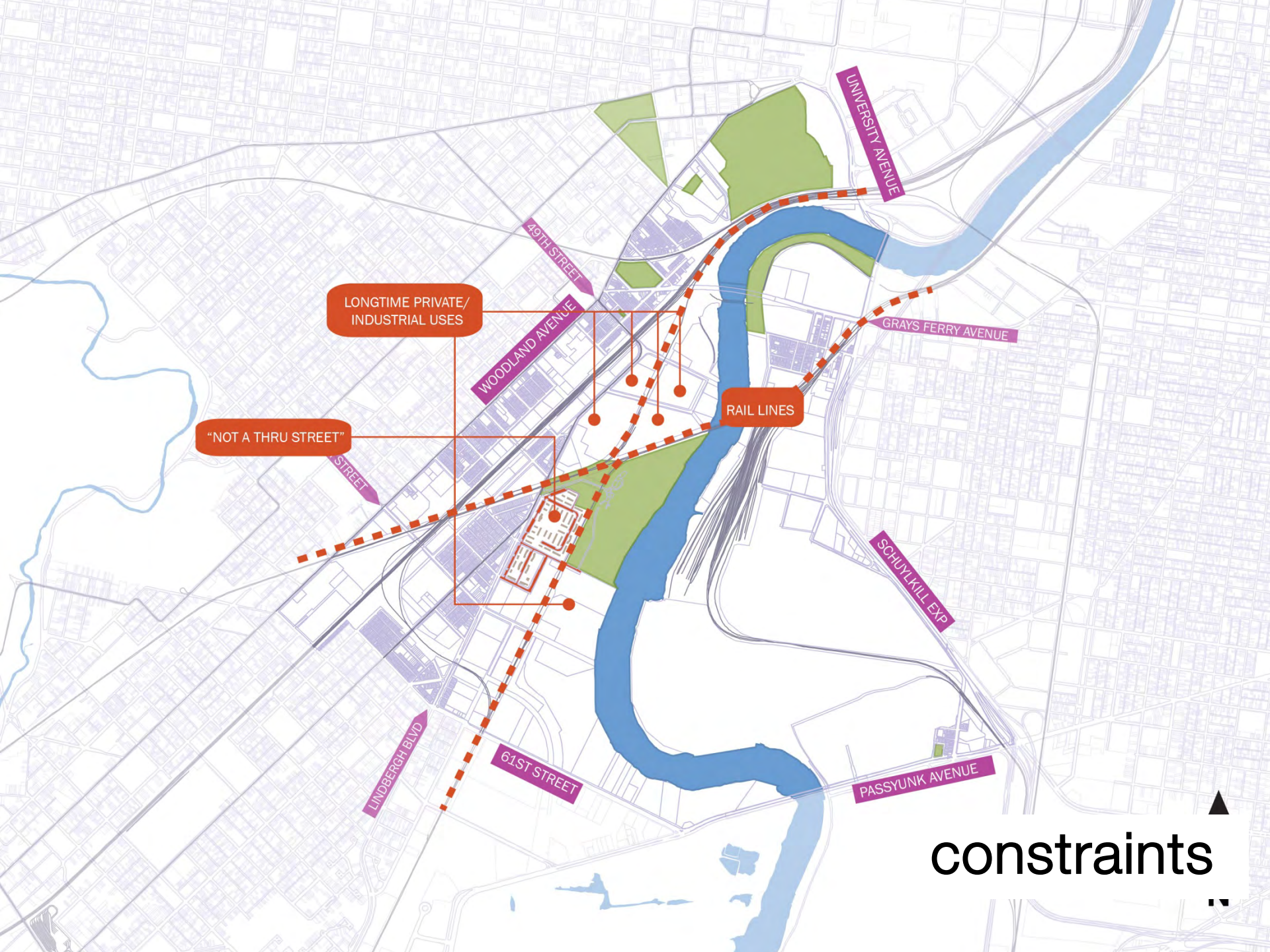
58th Street Greenway
Under Construction

Bartram's Mile
Opening Soon

Community Farm
and Orchard
Opened October 2011

PHL Wetland
Mitigation
Spring 2013

new green space



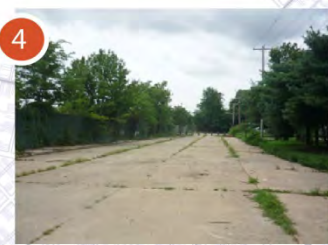
LONGTIME PRIVATE/
INDUSTRIAL USES

"NOT A THRU STREET"

RAIL LINES

constraints





riverfront "access"





case studies
Montreal, Canada



case studies

Brooklyn, NY



case studies

Qinhuangdao City, Hebei Province, China



case studies
Palm Beach County, Florida



case studies

Haerbin City, Heilongjiang Province, China

- PennPraxis: data collection, civic engagement and project management
- Andropogon Associates: landscape analysis, design alternatives and cost estimates
- October/November: analysis and civic engagement
- December: alternatives review

tasks and schedule

- Sat., November 10: design workshop
 - 12:00pm-3:00pm, Bartram's Garden
 - Lunch provided.
- RSVP at praxis@design.upenn.edu, or tell one of us at this meeting.
- Monitor the project at www.planphilly.com/bartramsmile.

one more chance!

- Dinner Conversation
 - Public Access
 - River Health
 - Park Space
 - Neighborhood Connections
 - Anything we're missing? Tell us!
- Ask questions! Give us your ideas!

today

- What currently does (or does not) bring you to Bartram's Garden? Schuylkill Banks?
- What parks do you visit regularly, and what aspects of these would you like to see in a park closer to your house?
- What activities would bring you to the riverfront more often?
- What mode of transportation would you take to this portion of the river? Can it be improved?

sample questions

- Fishing
- Entertainment venue
- Playground for adults
- New ways to experience nature
- Boat launches/races
- Versatile: balance passive and active
- Botanic building reuse (café, education, sports)
- Kite flying
- Shaded gathering space
- Activities that cannot be found in Southwest
- Perpendicular connections

ideas we've heard so far

