

PENNSYLVANIA
BALLET

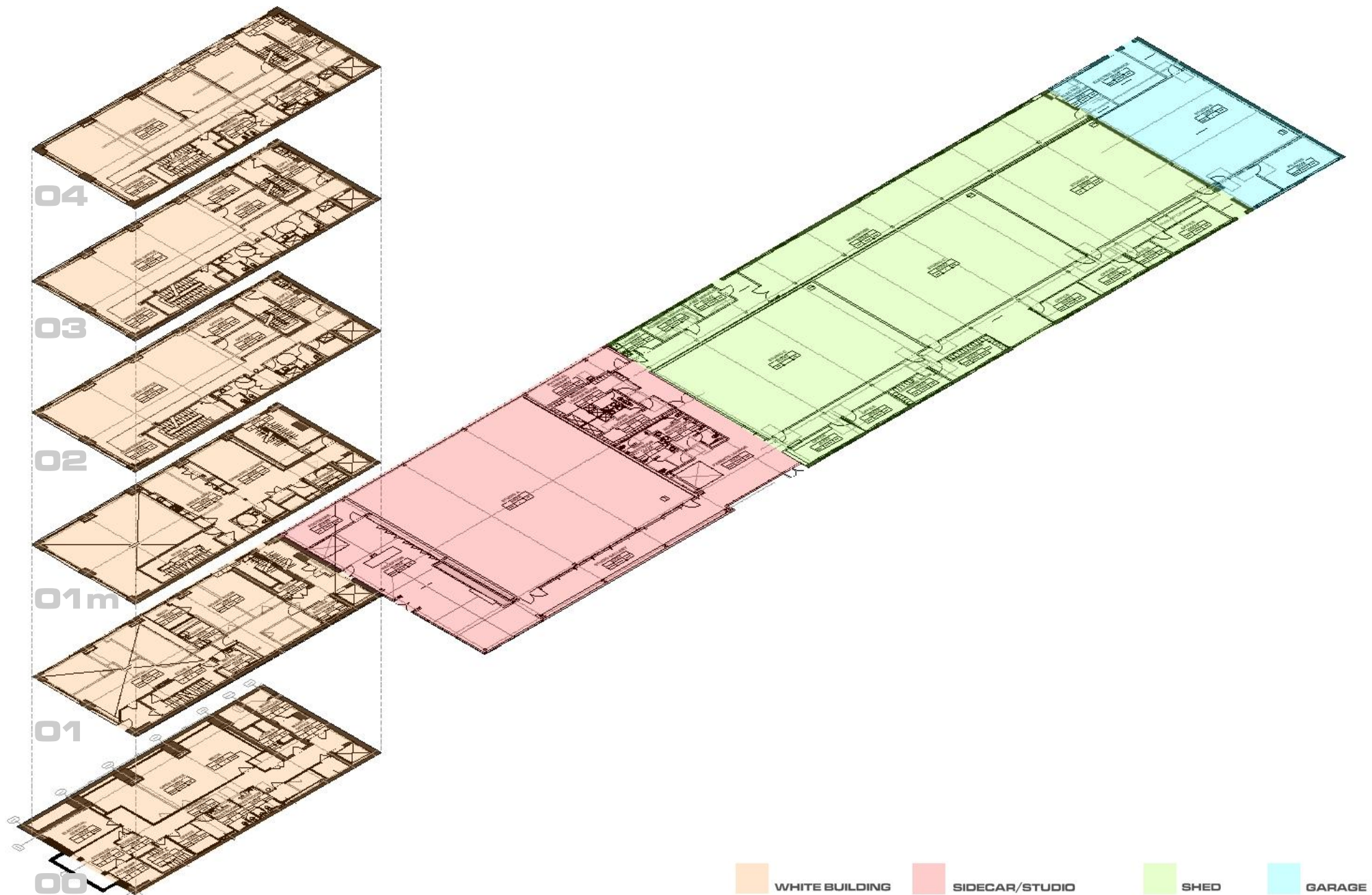
February 23, 2010



The Ballet currently owns a collection of buildings at Broad and Wood streets in Philadelphia. Currently comprised of 5 buildings The Ballet will restore and reuse 3 of the buildings and demolish 2 of the buildings to make way for a new building which will house reception area, locker rooms, and a large rehearsal studio.



PHASE 1B IMPLEMENTATION



PROJECT 1B LAYOUT



The Pennsylvania Ballet owns a collection of buildings at Broad and Wood streets in Philadelphia. Currently comprised of 5 buildings The Ballet will restore and reuse 3 of the buildings and demolish 2 of the buildings to make way for a new building which will house reception area, locker rooms, and a large rehearsal studio.

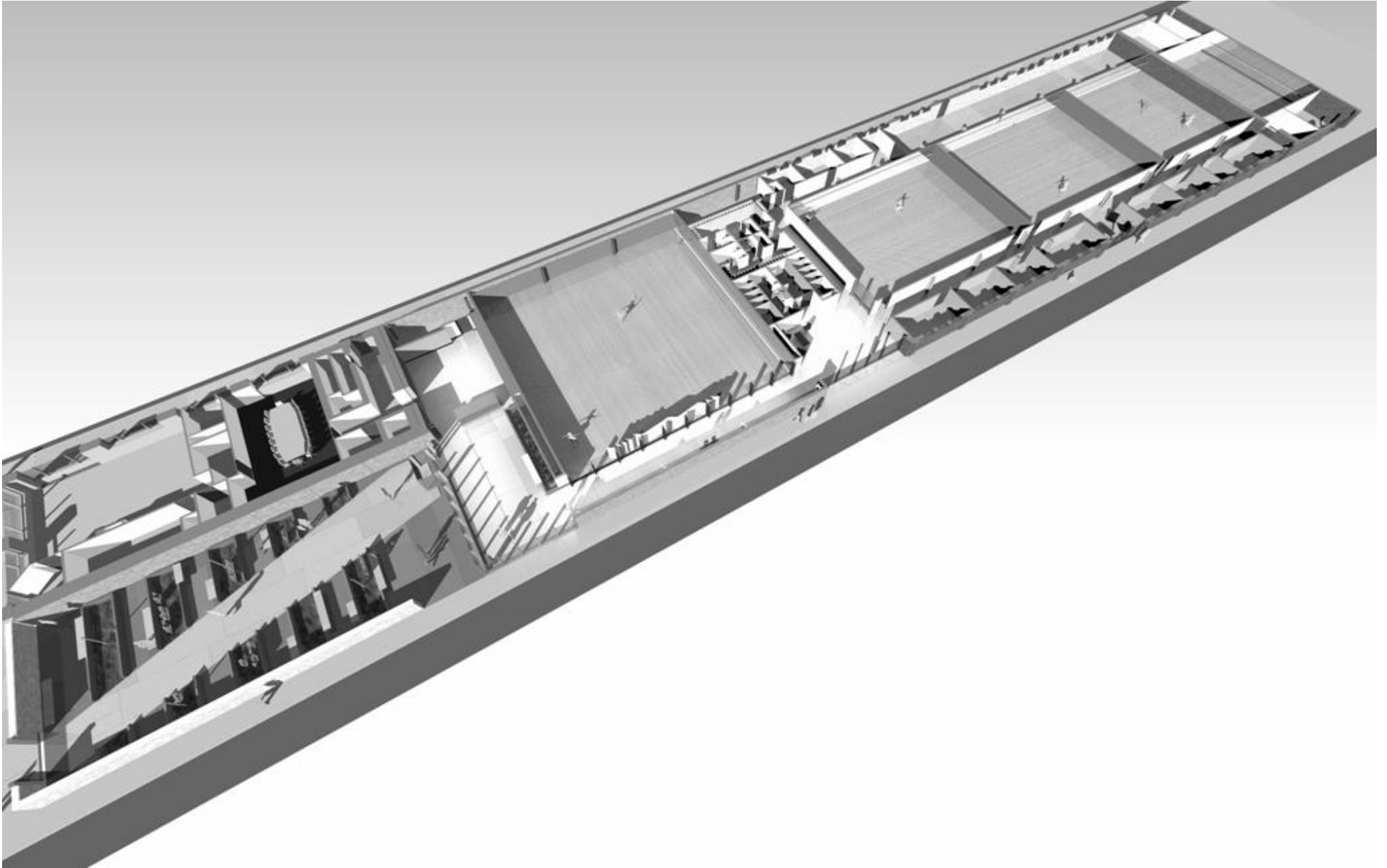
The new complex, along The Avenue of The Arts, will allow the Ballet to exist under one roof. This facility will establish a tangible identity for Pennsylvania Ballet on the city's major arts corridor, cementing the Ballet as an important part of the region's cultural landscape and a major presence on Broad Street.



The renovated shed building and Studio Building will feature a green roof system that will aid in controlling the temperature of the spaces as well as provide an attractive roovescape to surrounding buildings.

WHITE BUILDING

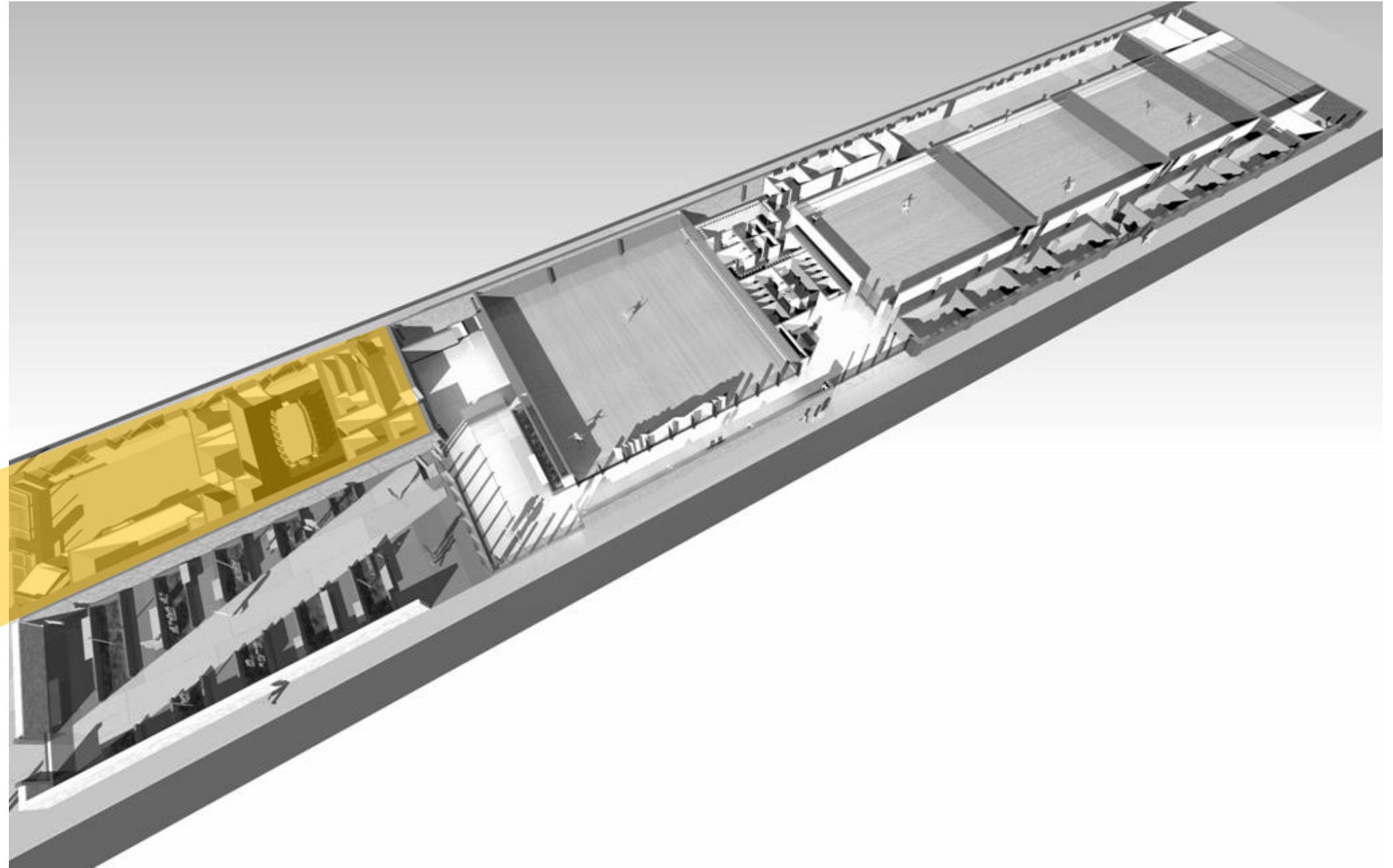
TYPICAL FLOOR LAYOUT



The White Building will feature a mix of open office space planning and closed offices for department heads.

WHITE BUILDING

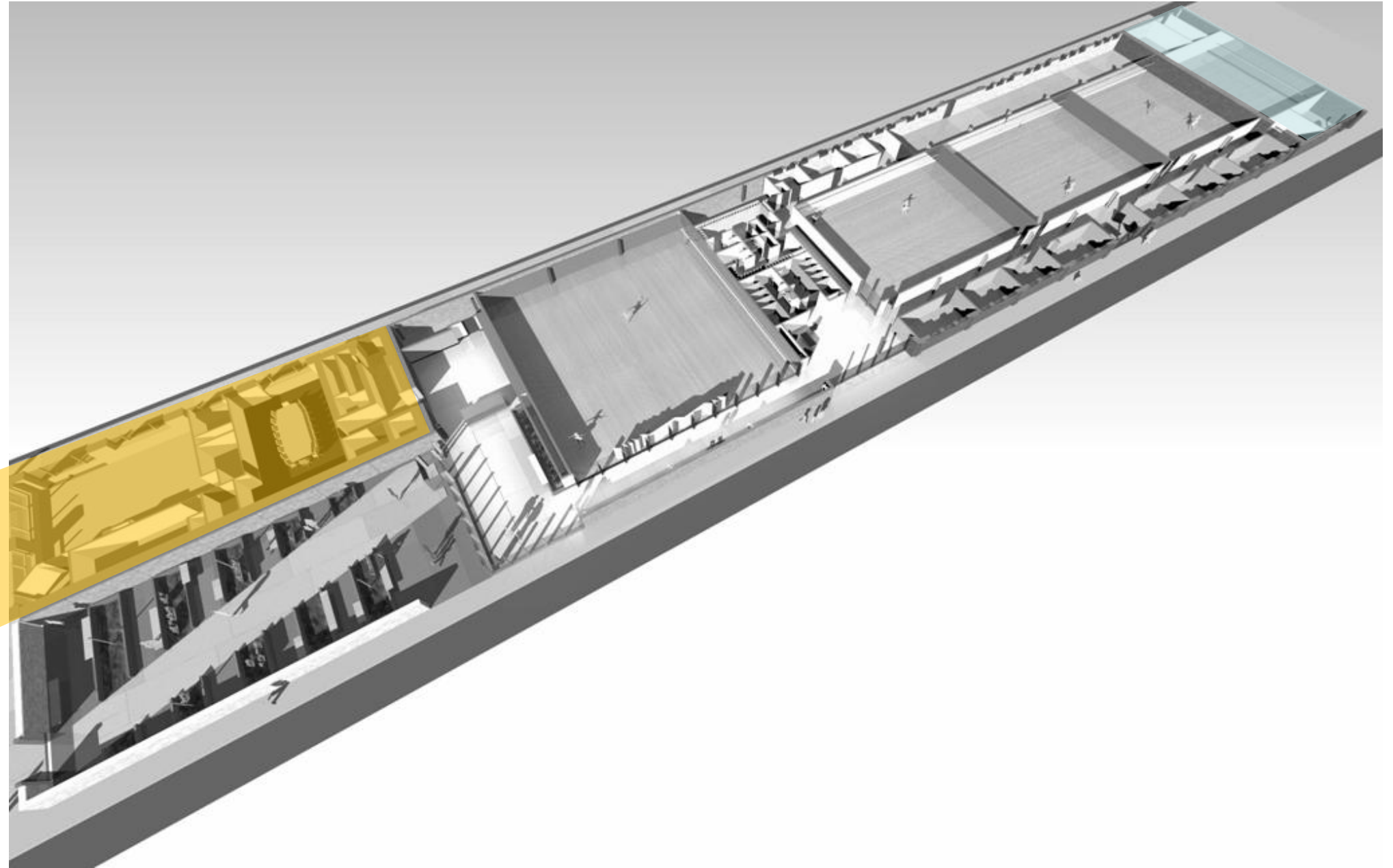
TYPICAL FLOOR LAYOUT



The White Building will feature a mix of open office space planning and closed offices for department heads.

WHITE BUILDING

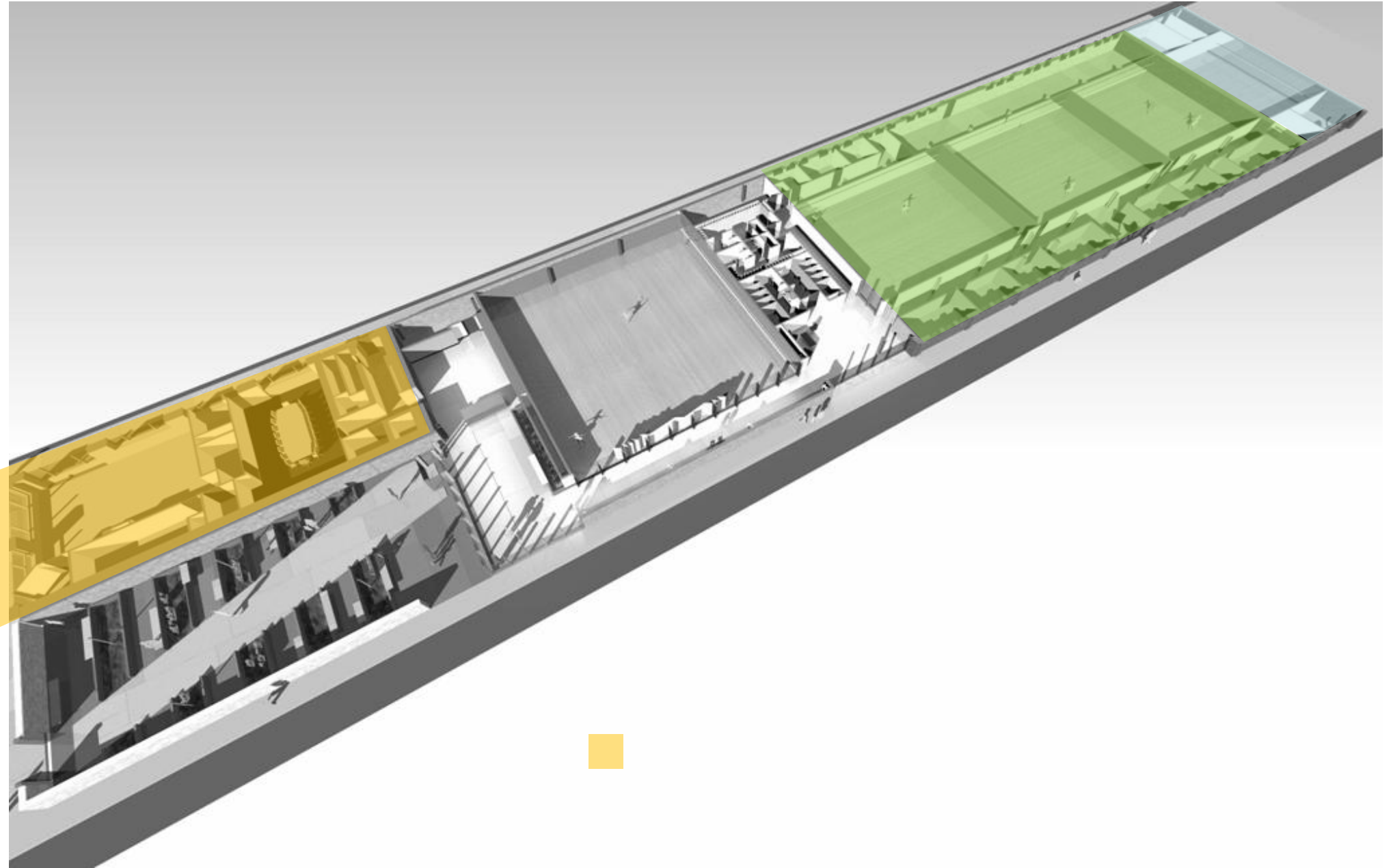
TYPICAL FLOOR LAYOUT



The White Building will feature a mix of open office space planning and closed offices for department heads.

WHITE BUILDING

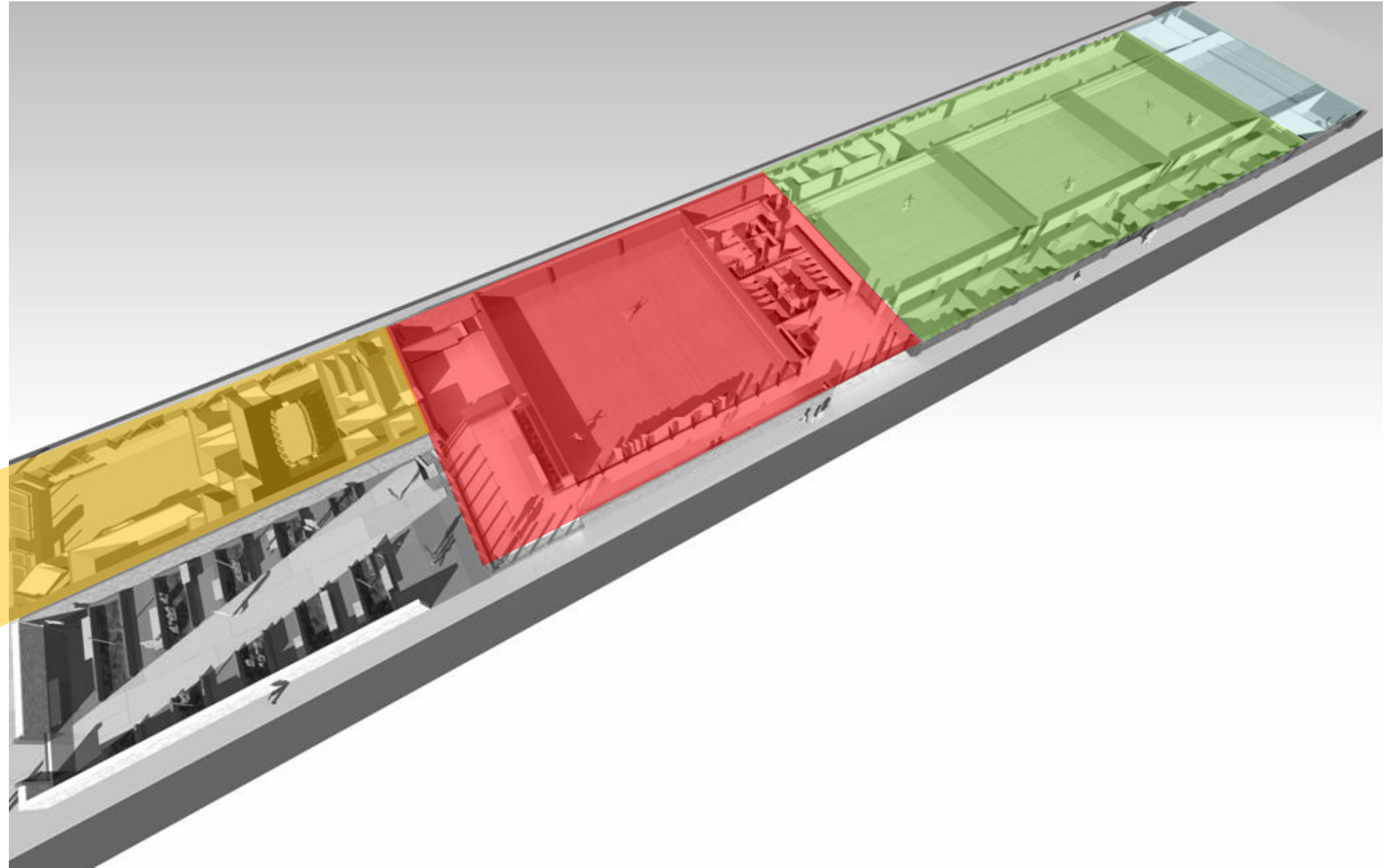
TYPICAL FLOOR LAYOUT



The White Building will feature a mix of open office space planning and closed offices for department heads.

WHITE BUILDING

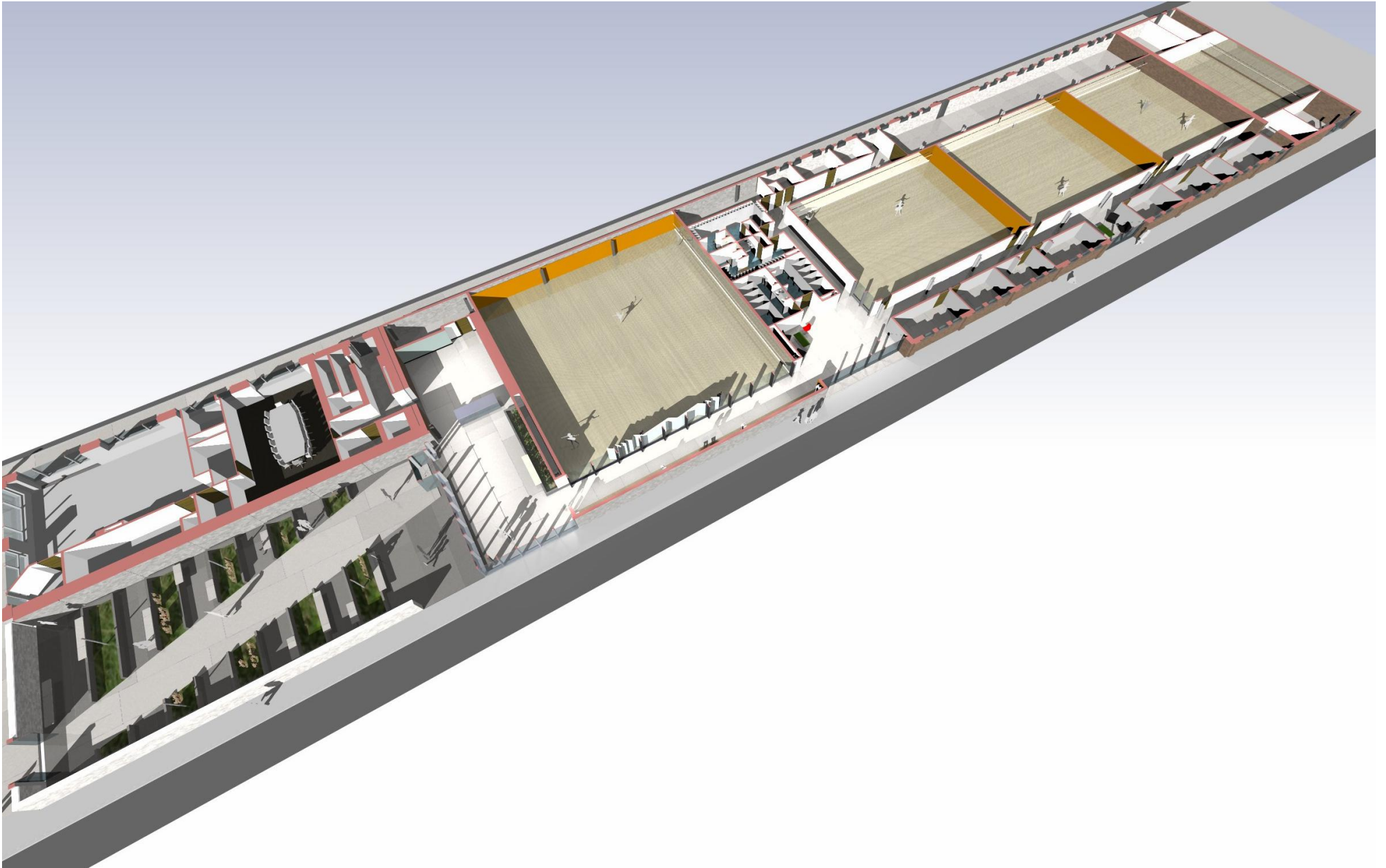
TYPICAL FLOOR LAYOUT



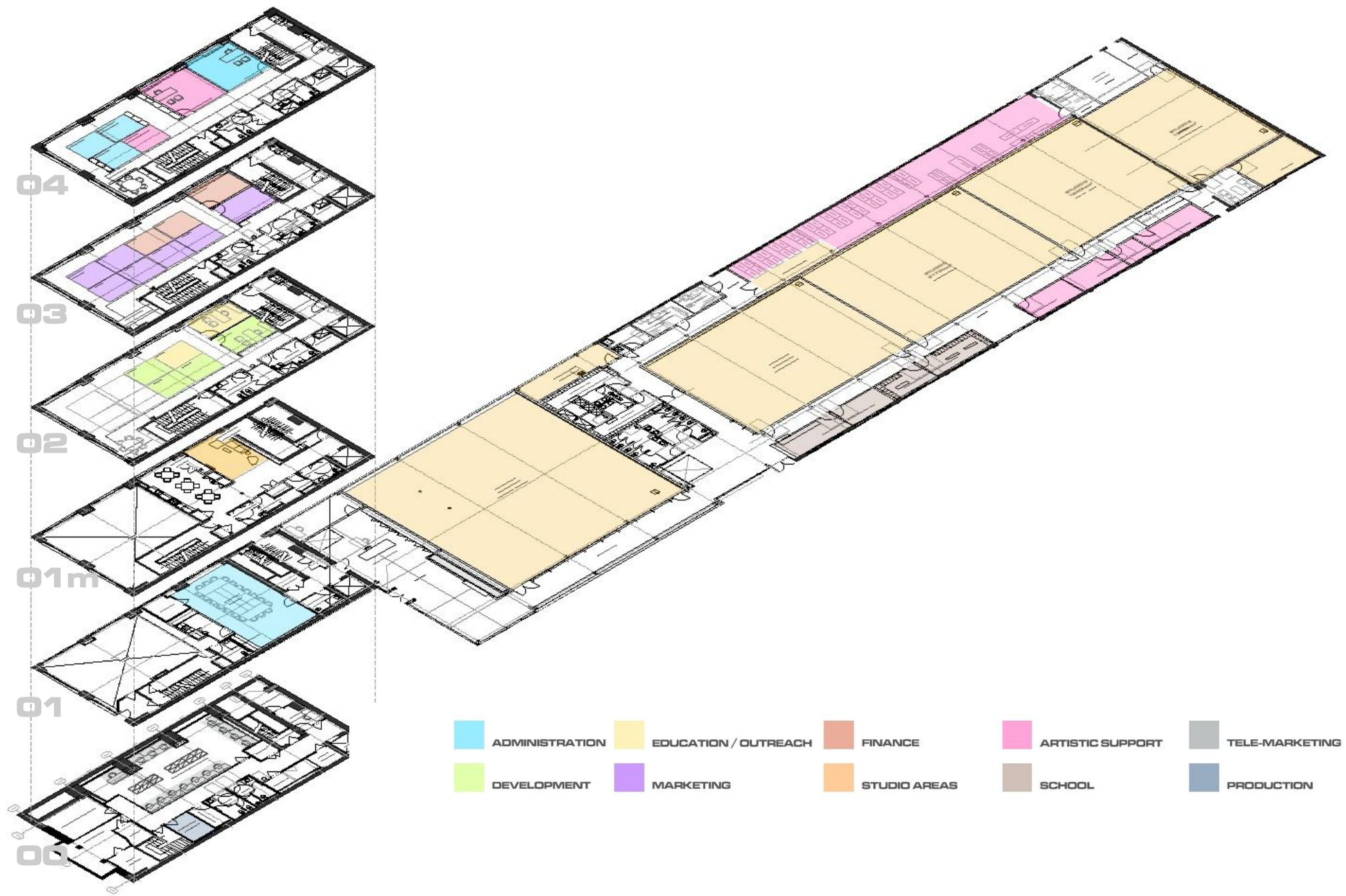
The White Building will feature a mix of open office space planning and closed offices for department heads.

WHITE BUILDING

TYPICAL FLOOR LAYOUT



The White Building will feature a mix of open office space planning and closed offices for department heads.



PROGRAM DISTRIBUTION



The Ballets new entrance will set back from broad St and will be accessed by passing through the garden space. The Garden space will have a series of landscaped benches where staff, dancers, and others involved with the Ballet can sit and relax.

LOBBY



PENNSYLVANIA
BALLET

emArchitecture

Erdy McHenry Architecture
www.em-arc.com

LOBBY



PENNSYLVANIA
BALLET

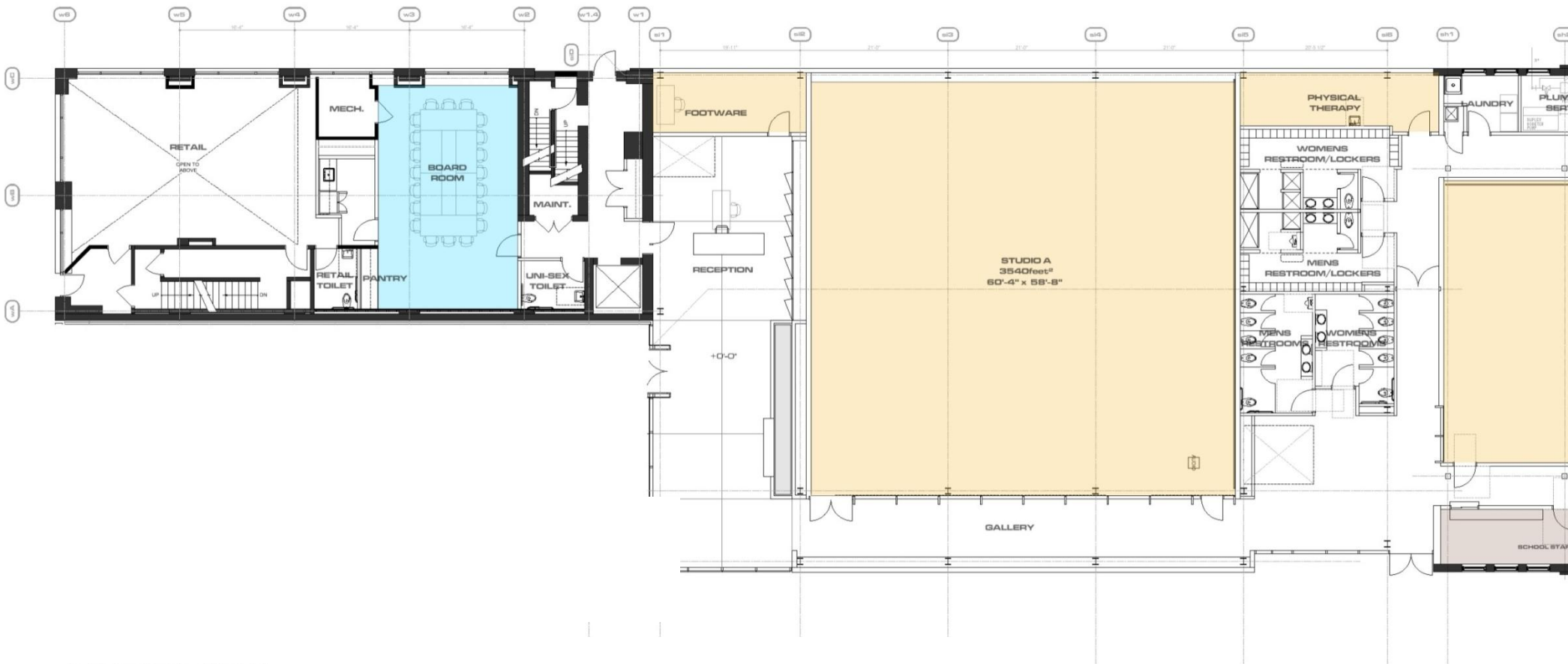
emArchitecture
Erdy Mullen Architecture
www.em-arc.com

PENNSYLVANIA
BALLET

emArchitecture

PHASE 1A & 1B

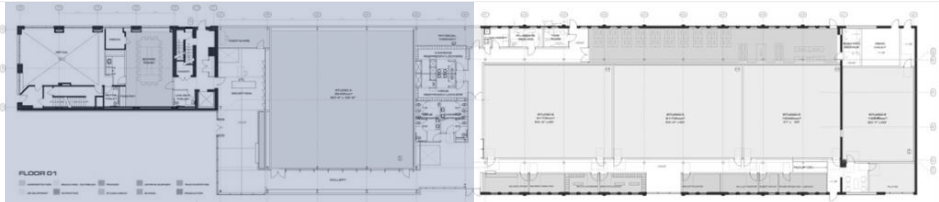


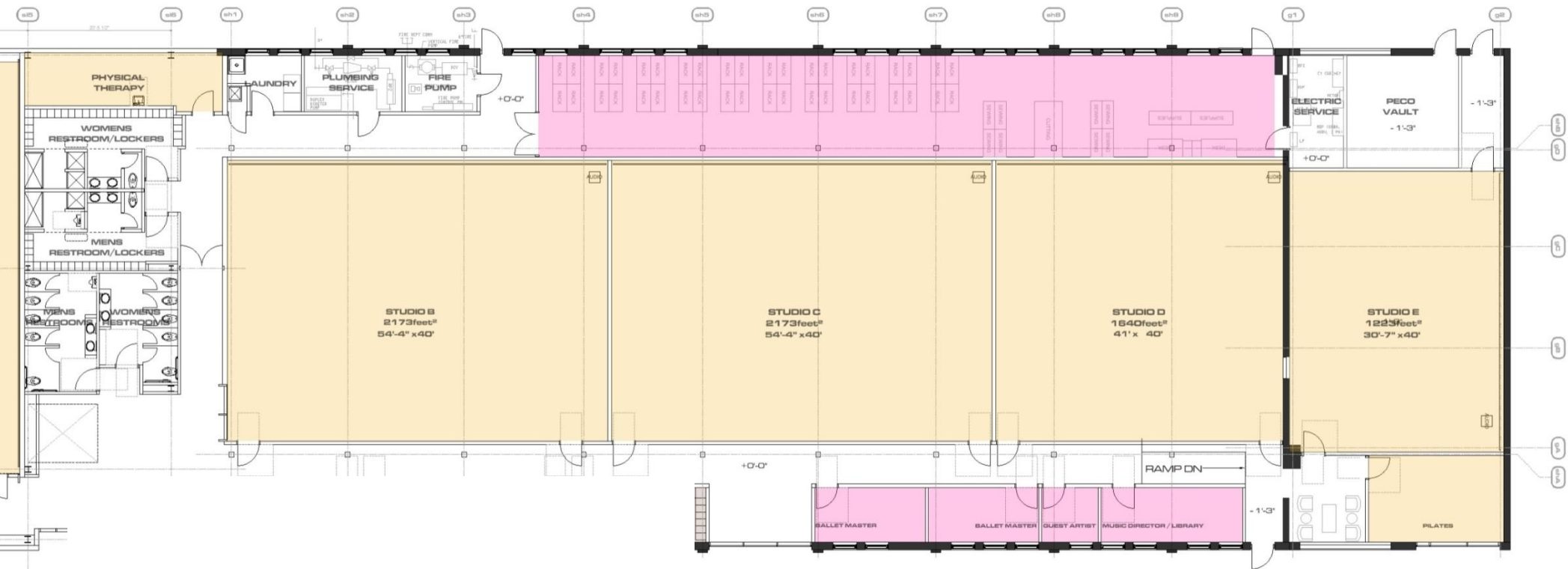


FLOOR 01



PROGRAM DISTRIBUTION

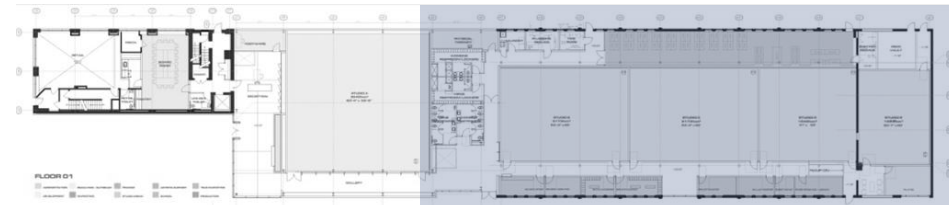


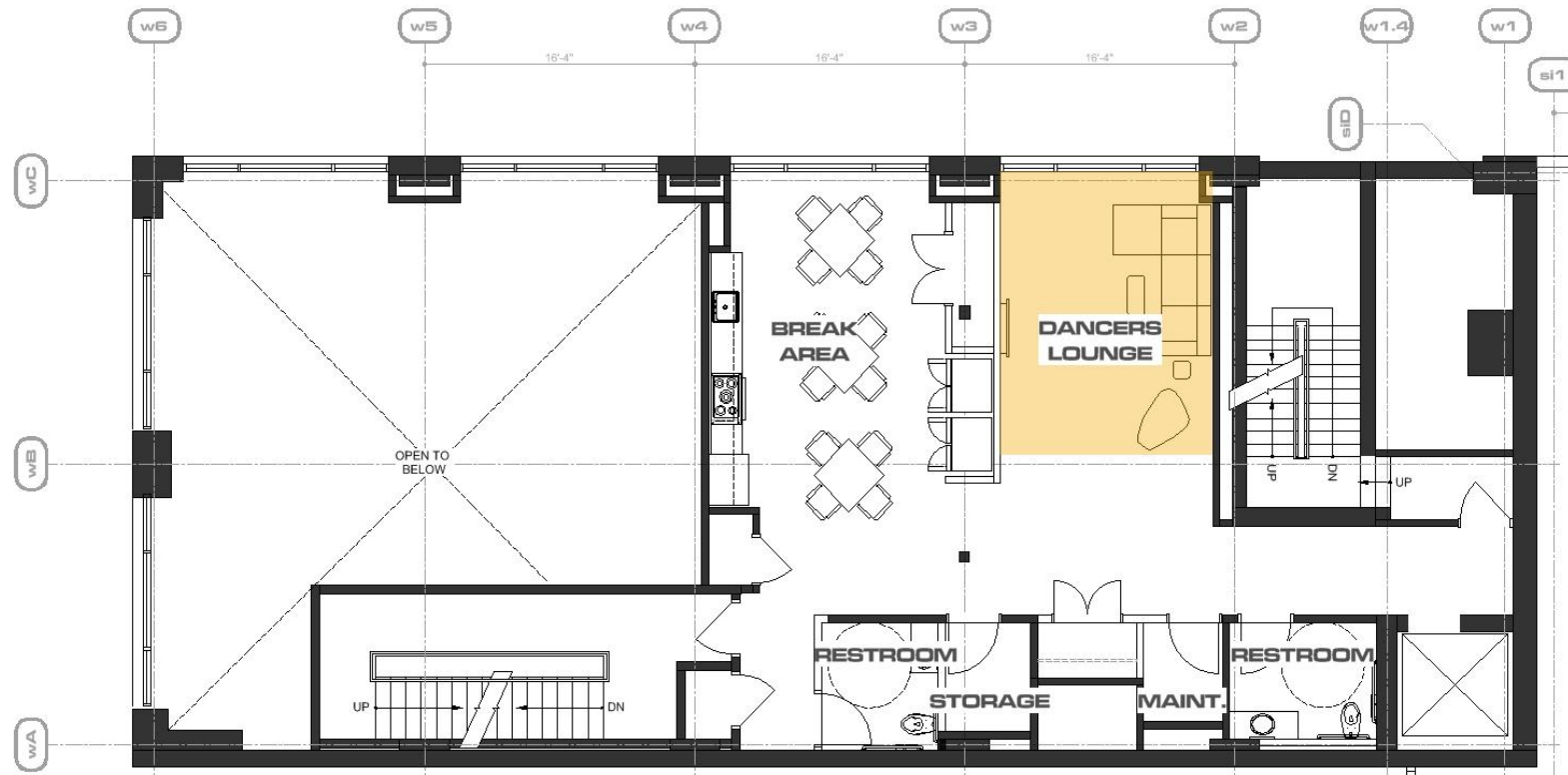


FLOOR 01



PROGRAM DISTRIBUTION





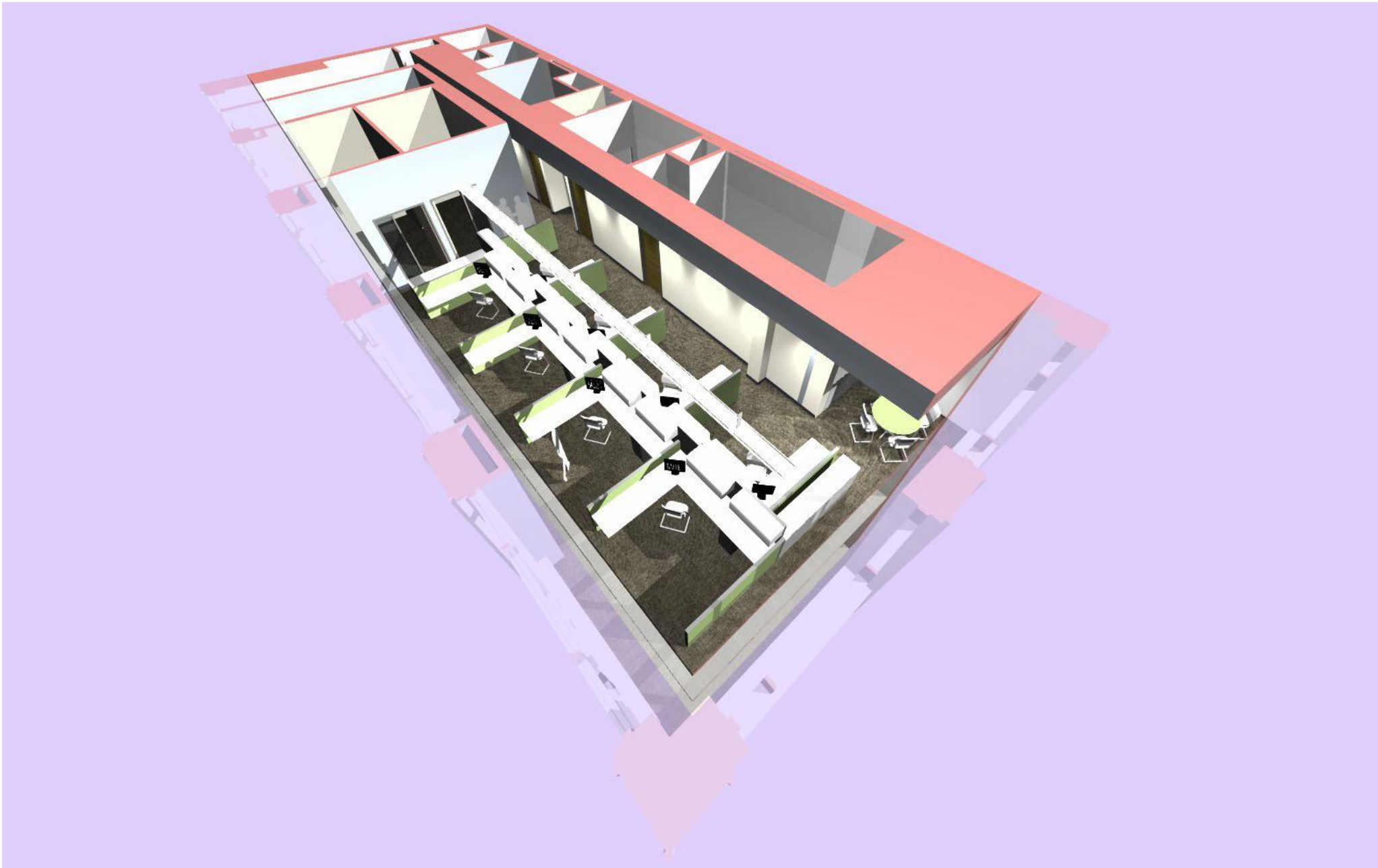
FLOOR 01m (Mezzanine)



PROGRAM DISTRIBUTION

WHITE BUILDING

TYPICAL FLOOR LAYOUT



The White Building will feature a mix of open office space planning and closed offices for department heads.

WHITE BUILDING

TYPICAL FLOOR LAYOUT



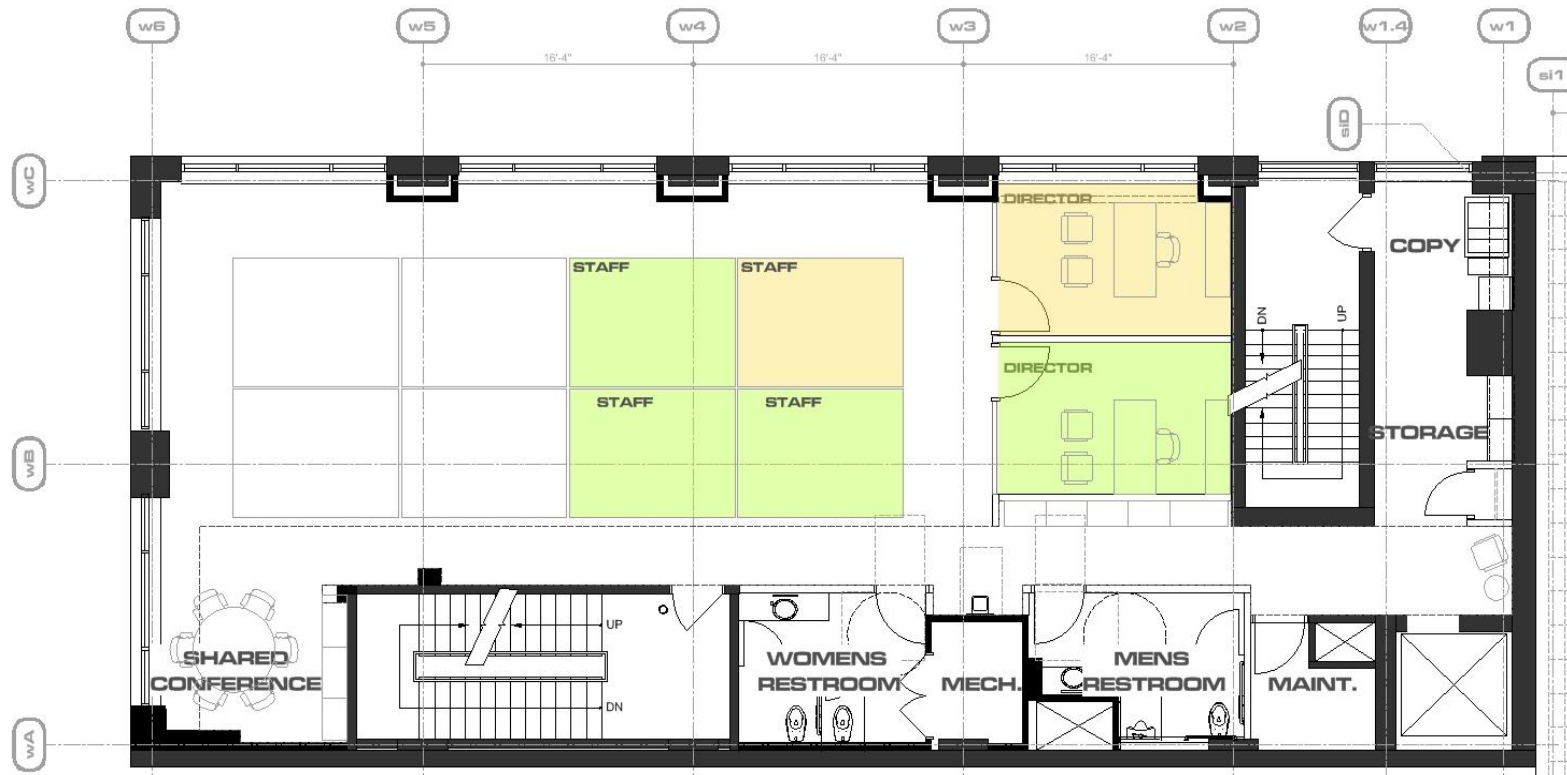
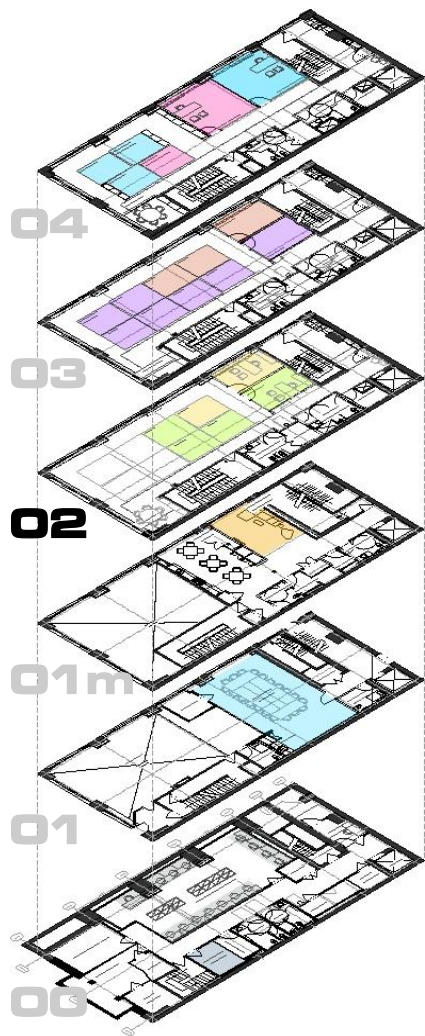
The open office space will have ample daylighting and a large expanse of north facing windows.

WHITE BUILDING

TYPICAL FLOOR LAYOUT



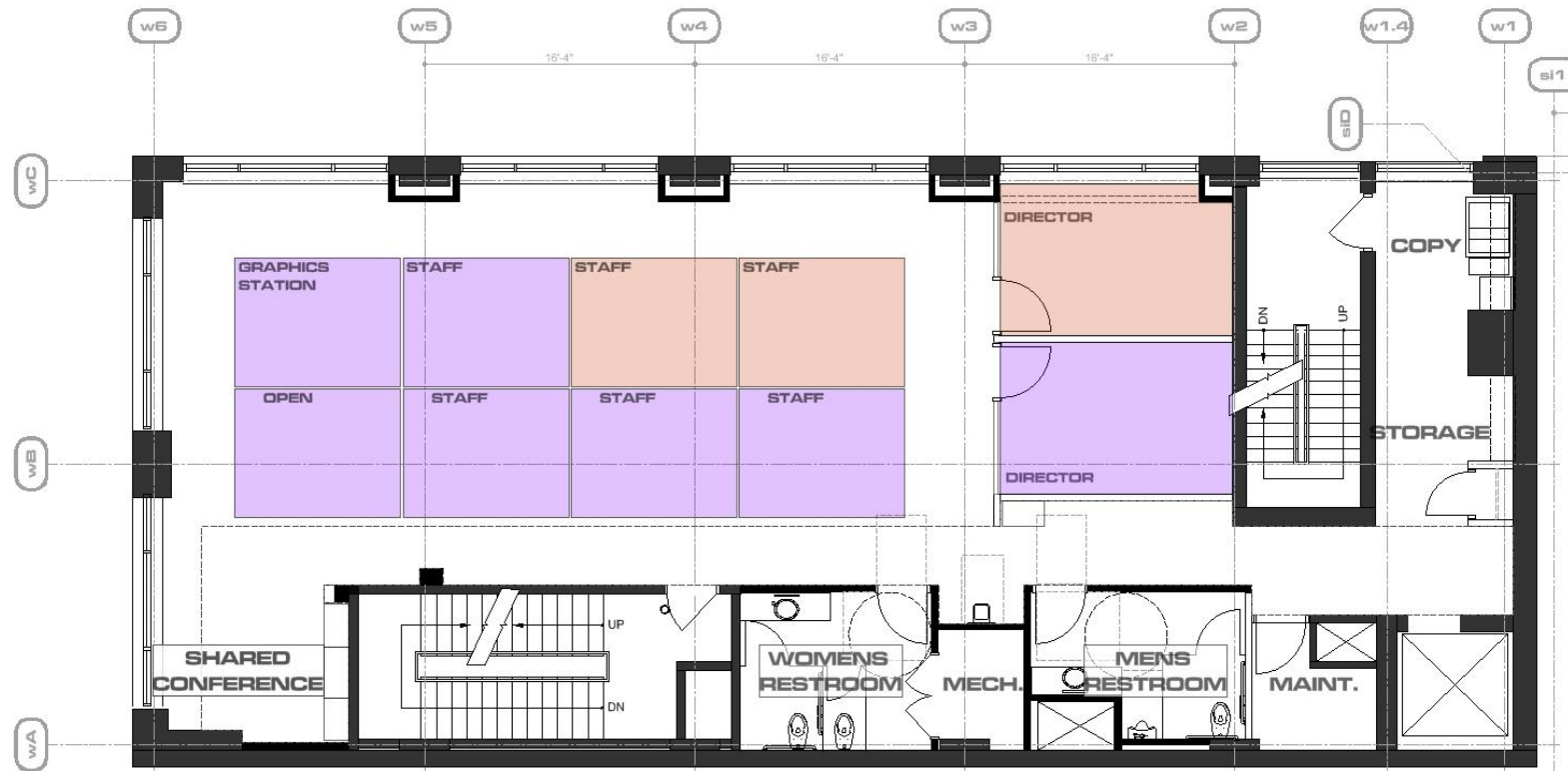
Each office floor will feature a shared conference room and shared filing space.



FLOOR 02



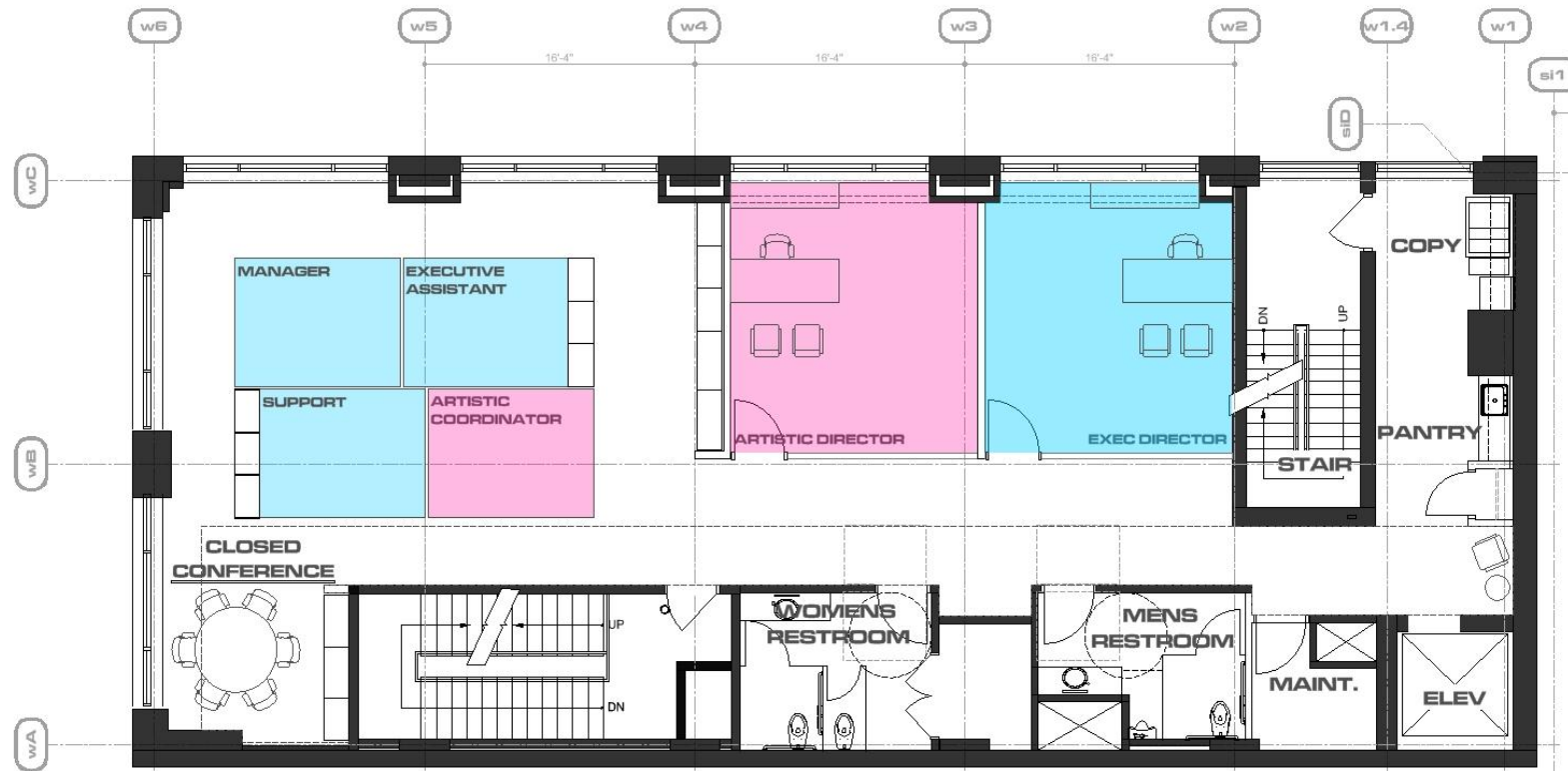
PROGRAM DISTRIBUTION



FLOOR 03



PROGRAM DISTRIBUTION



FLOOR 04



PROGRAM DISTRIBUTION



PHASE 2 IMPLEMENTATION



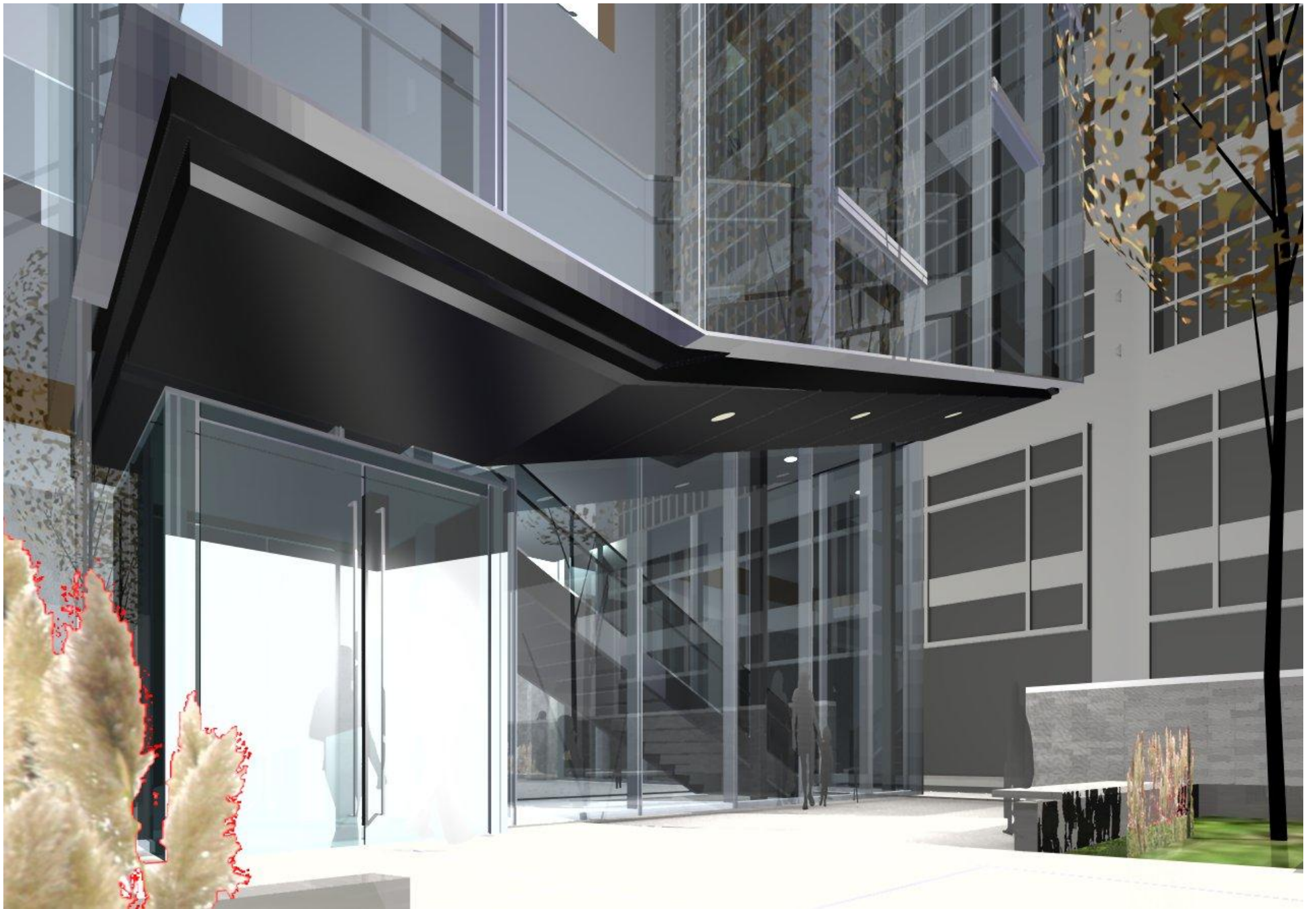
The current phase of the project is being planned for the future implantation of a 200 person black box theater and a large rehearsal studio. Phase II will isolated to the new construction of portion of the project limiting construction footprint and reducing cost.



The current phase of the project is being planned for the future implantation of a 200 person black box theater and a large rehearsal studio. Phase II will isolated to the new construction of portion of the project limiting construction footprint and reducing cost.



Phase II will slide the glass façade closer to Broad St to accommodate pre-function spaces for the new theater. The slide forward along with the larger expanse of glazing will further increase the Ballets presence along the Avenue of The Arts.



PHASE 2



emArchitecture

Erdy McHenry Architecture, LLC