



Interim Delaware waterfront bicycle & jogging trail

Repeat success of Schuylkill River trail



Learn from New York: a continuous promenade & bike trail



Learn from Vancouver



Current Columbus Blvd. trail unsafe for children



Proximity to fast moving cars

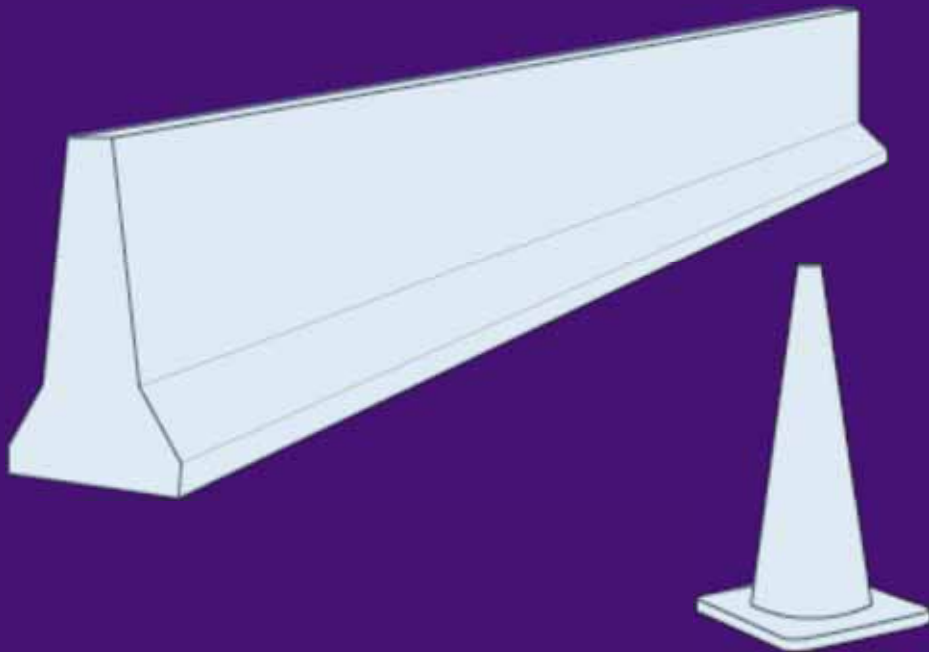


Increases anxiety



Original goal: create interim trail with inexpensive parts in right-of-way

Donated items for construction, such as shipping containers, Jersey barriers, and traffic cones.



The Ben Franklin Brand trail using image of the bridge





PENN CENTER CITY DISTRICT

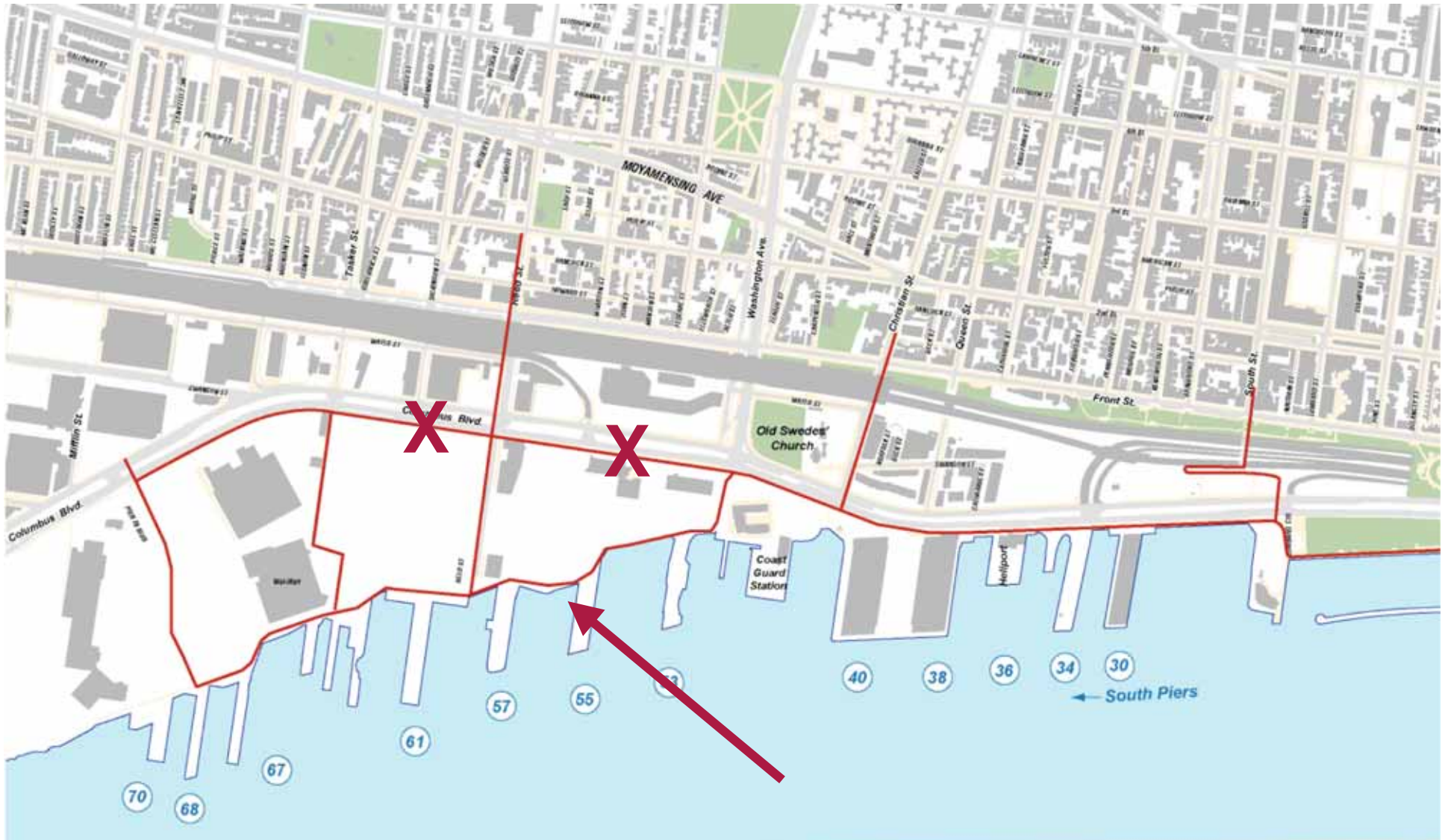
Temporary trail gets families with children to the water



PennDOT rejected idea of taking a lane for two-way protected trail on east side



Can it be done at the river's edge?
Provisional answer is "yes." Three key owners may support



The trail begins just south of Wal-Mart.



Temporary bike rental in parking lot



The trail at Pier 70 / Wal-Mart

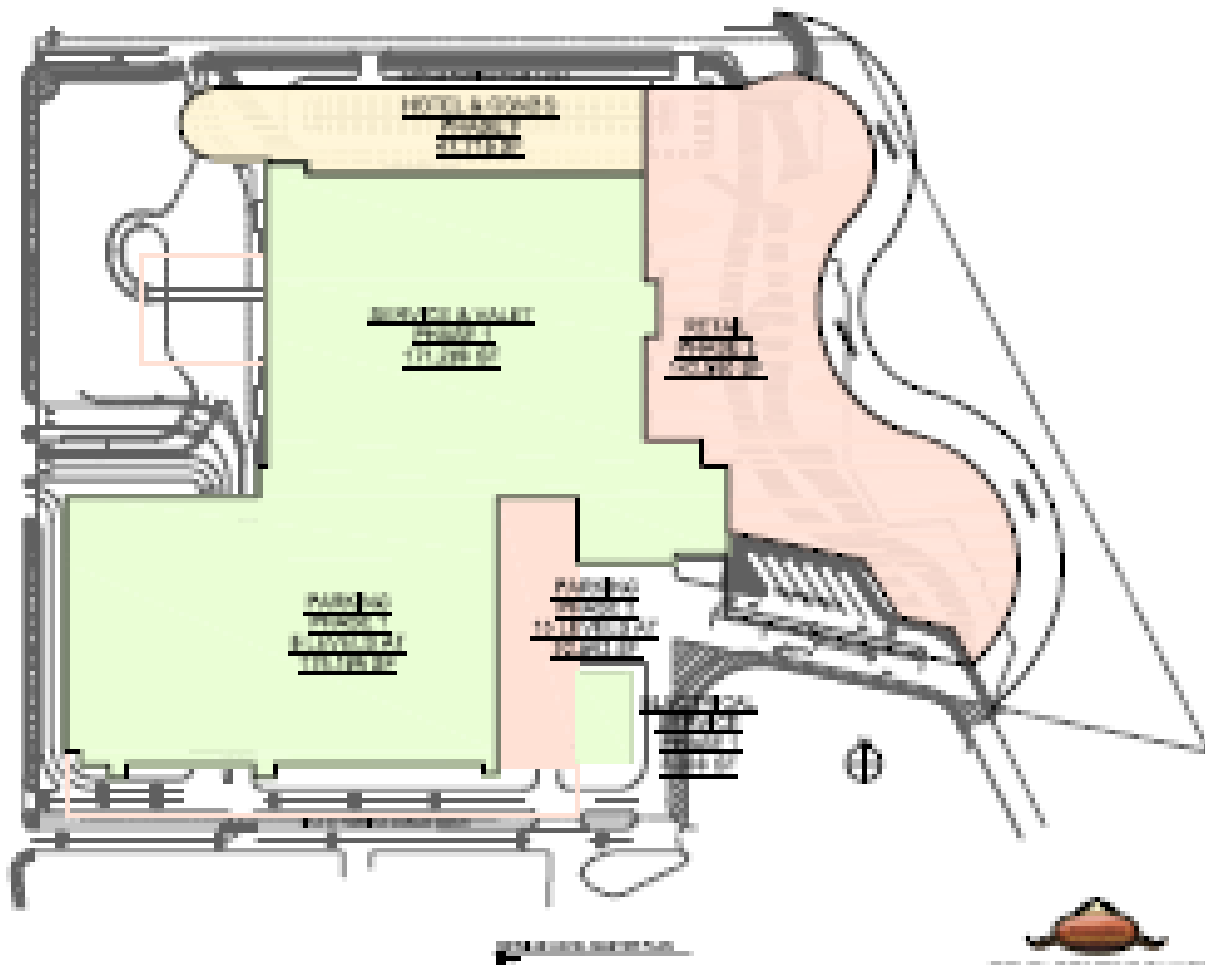


The trail at Pier 70 / Wal-Mart



River's edge at the Foxwood's site



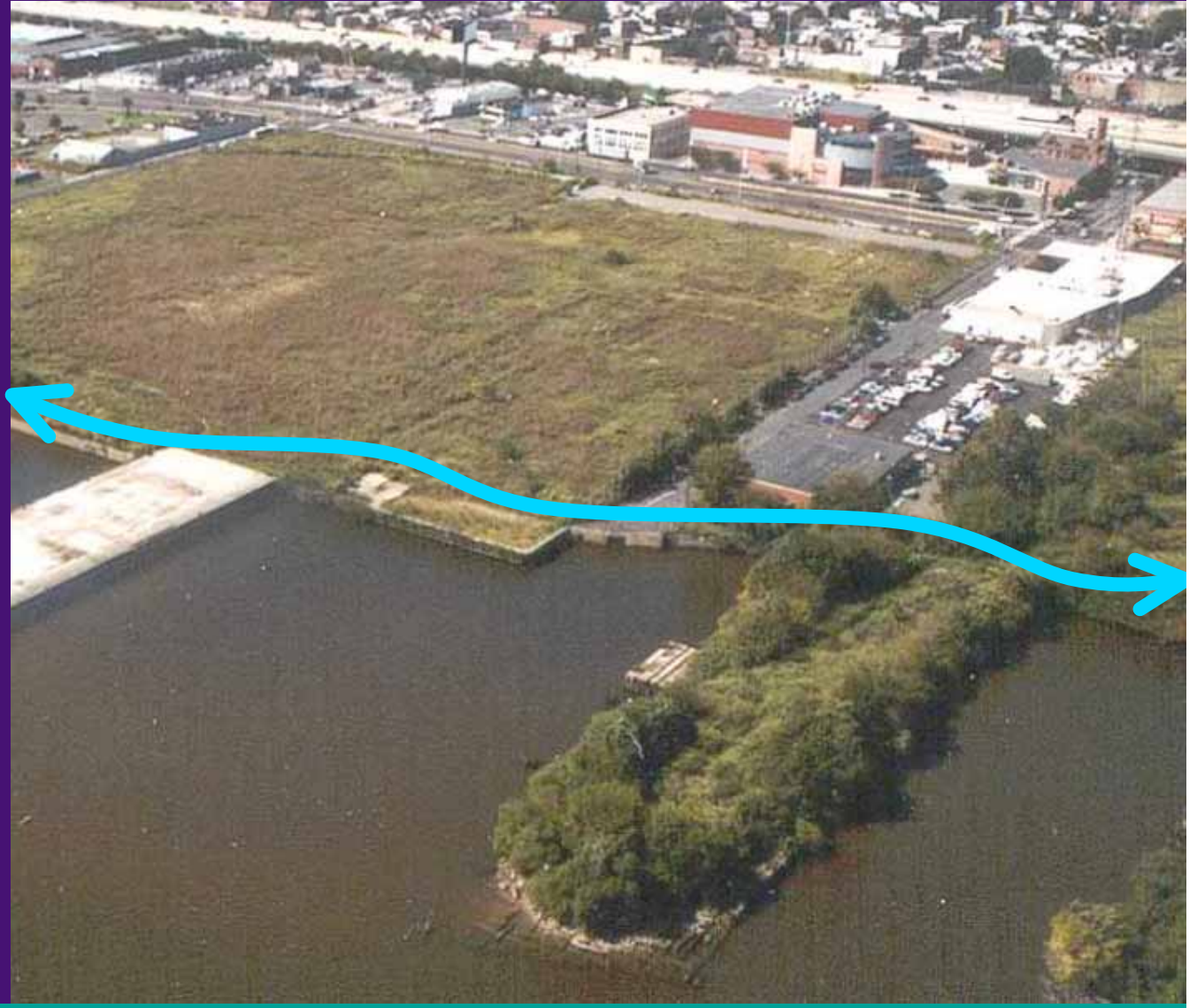


LivingCity

DEVELOPMENT PHASES

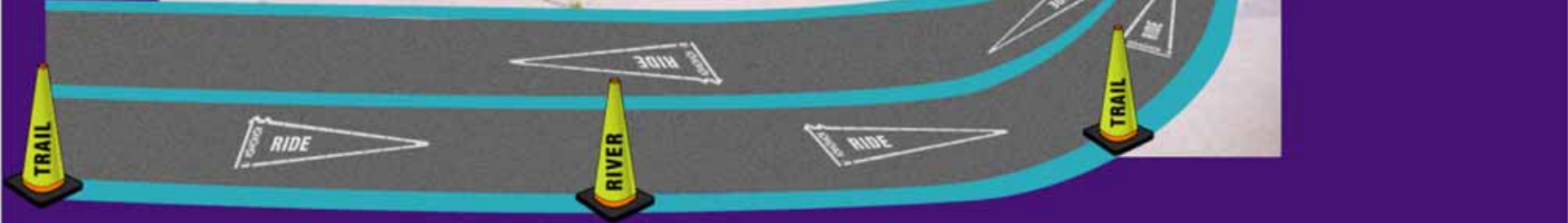


To the east of Comcast's parcel



Along river's edge at Sheet Metal Workers site





Around the Coast Guard site



Along Columbus Blvd. in front of Piers 38 & 40



Along Columbus Blvd. at Piers 38 and 40



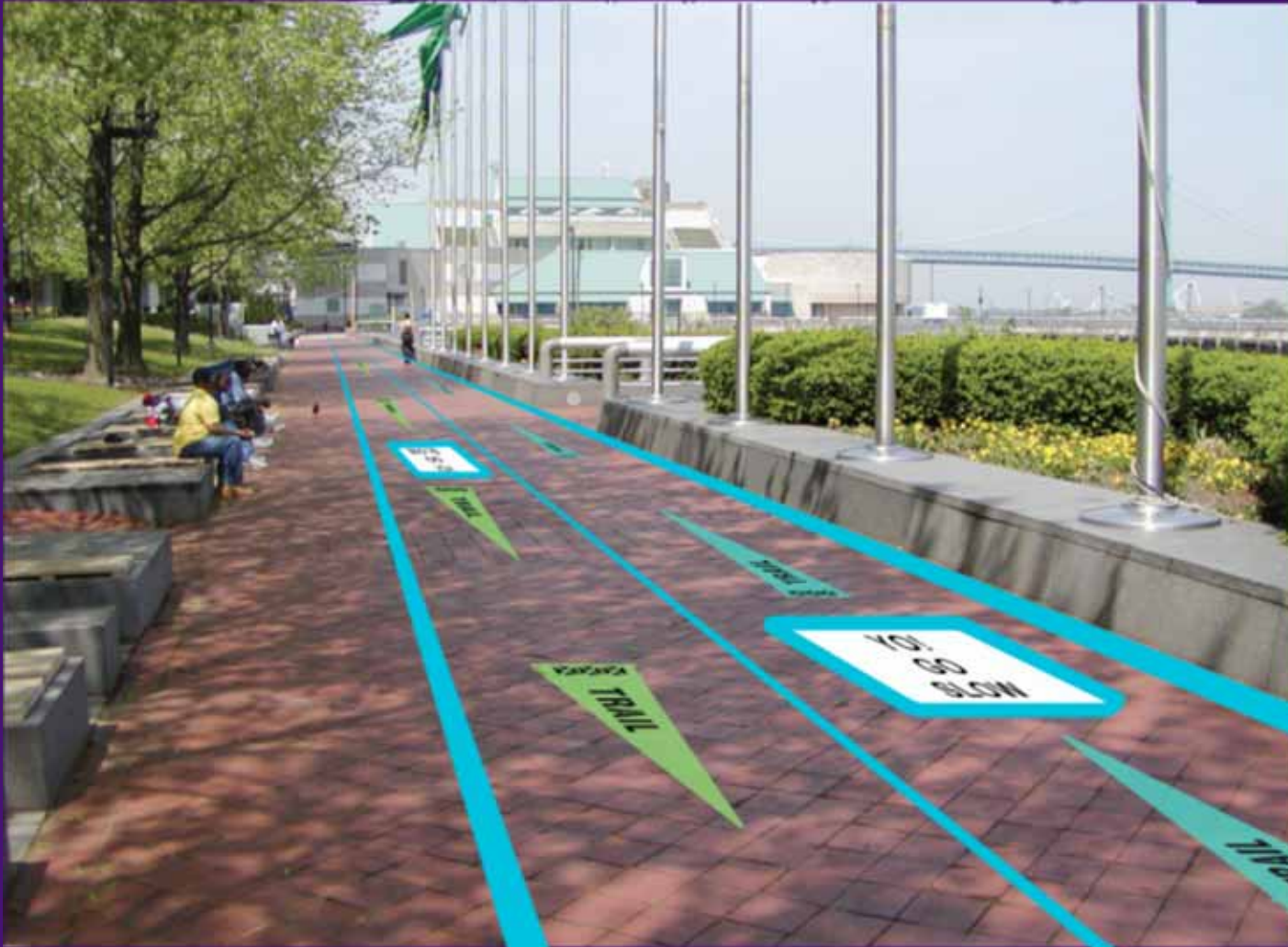
Along Columbus Blvd. at Piers 38 and 40



Along sidewalk to Penns Landing



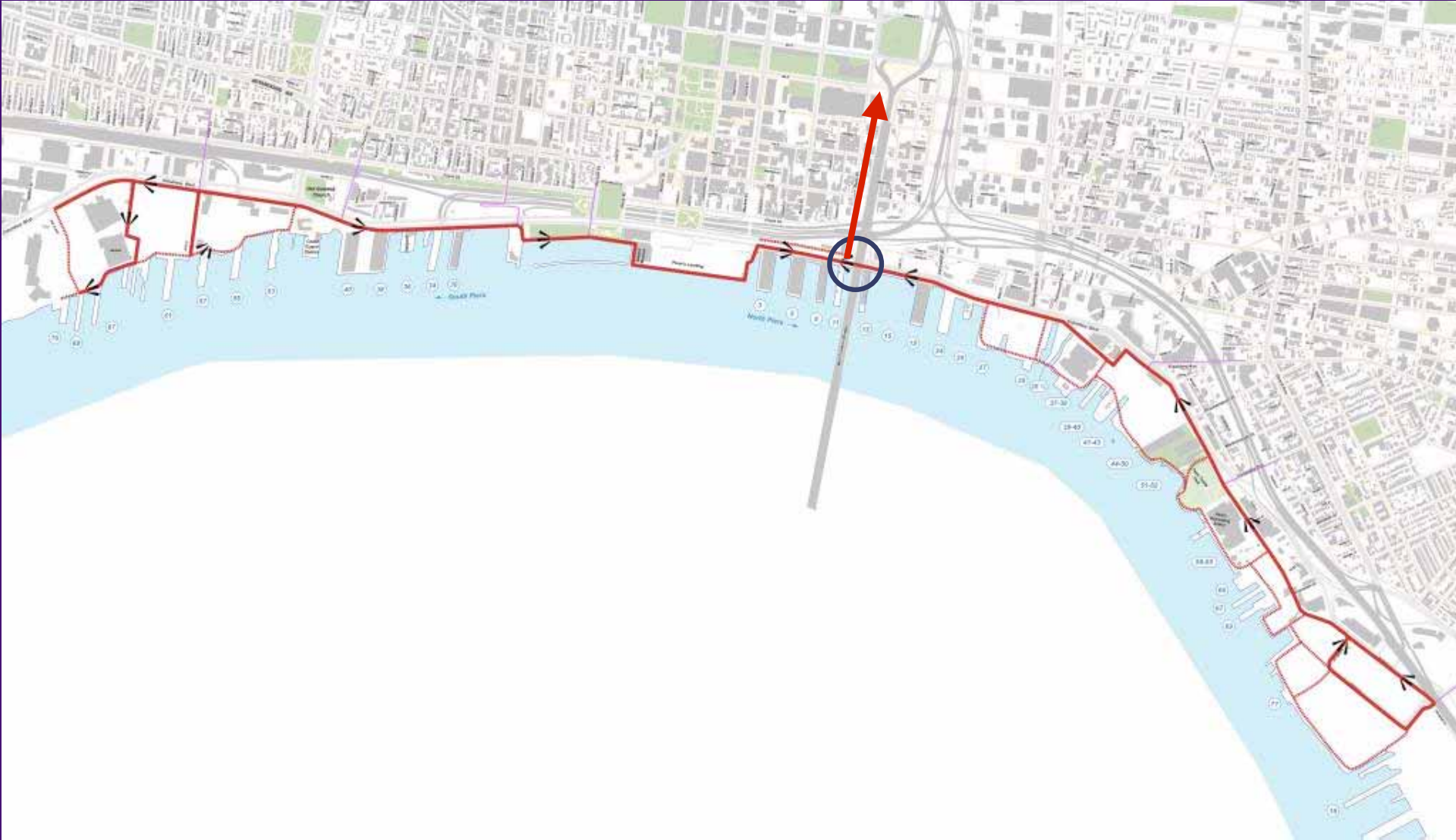
**At Penn's Landing, with Penn's Landing Corporation's Permission.
Otherwise the trail will follow Columbus Blvd.**



At Pier 9 second bike rental facility & connection to trail across the bridge via Race & Florist Street



Connection to bridge

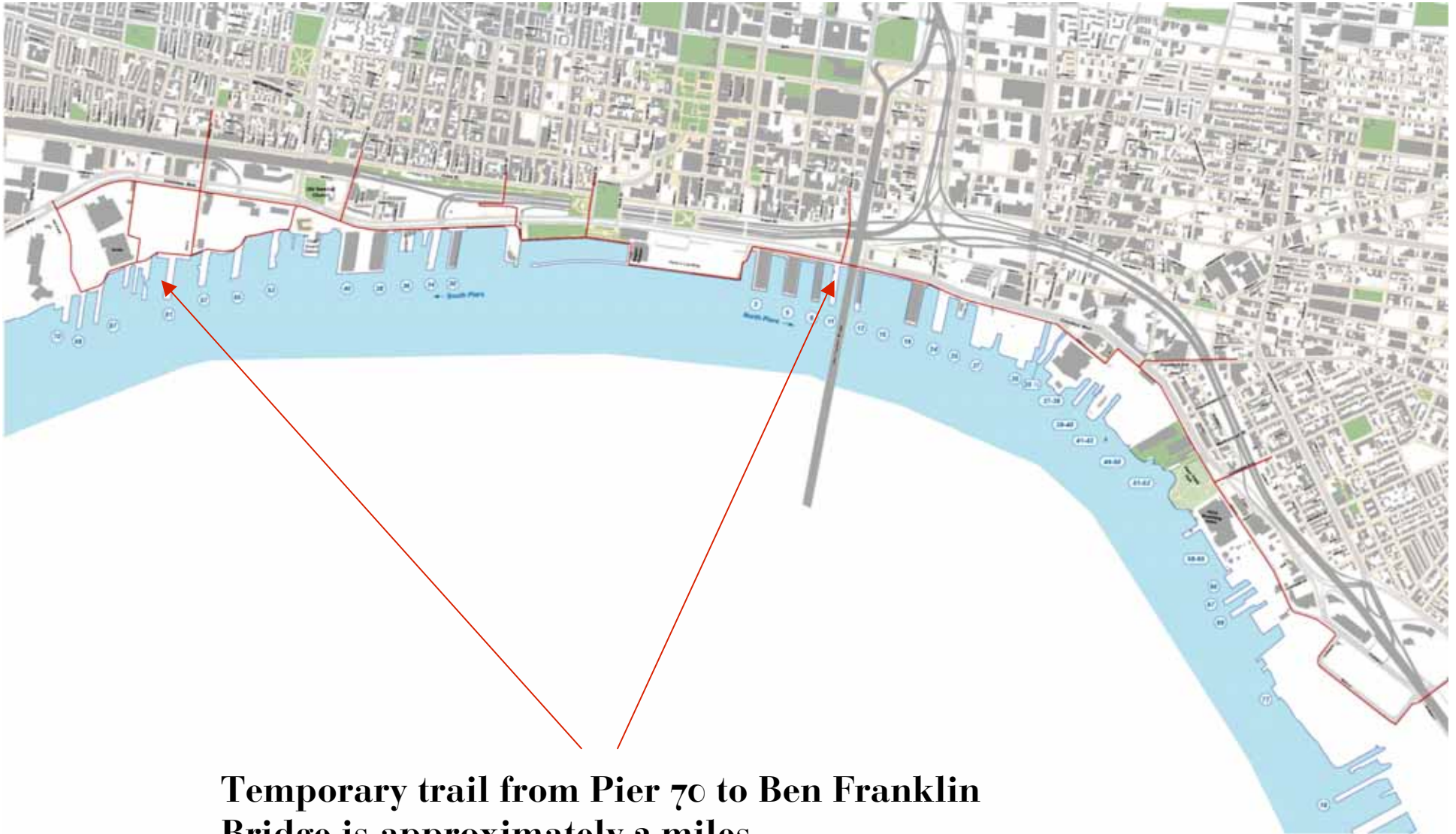


Florist Street to the bridge



Connect to Camden's waterfront





Temporary trail from Pier 70 to Ben Franklin Bridge is approximately 2 miles.